

Celestra

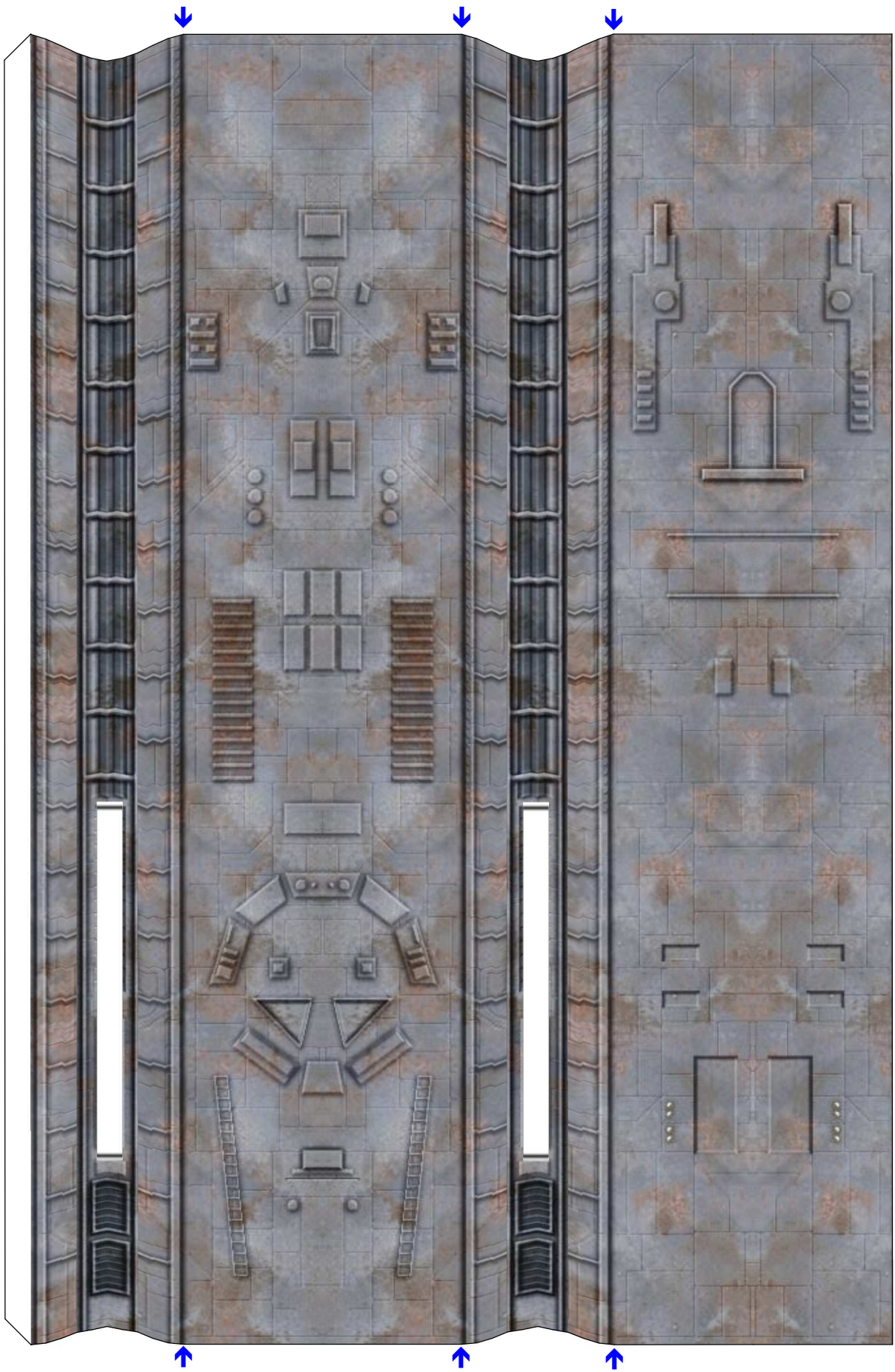
from
Battlestar Galactica



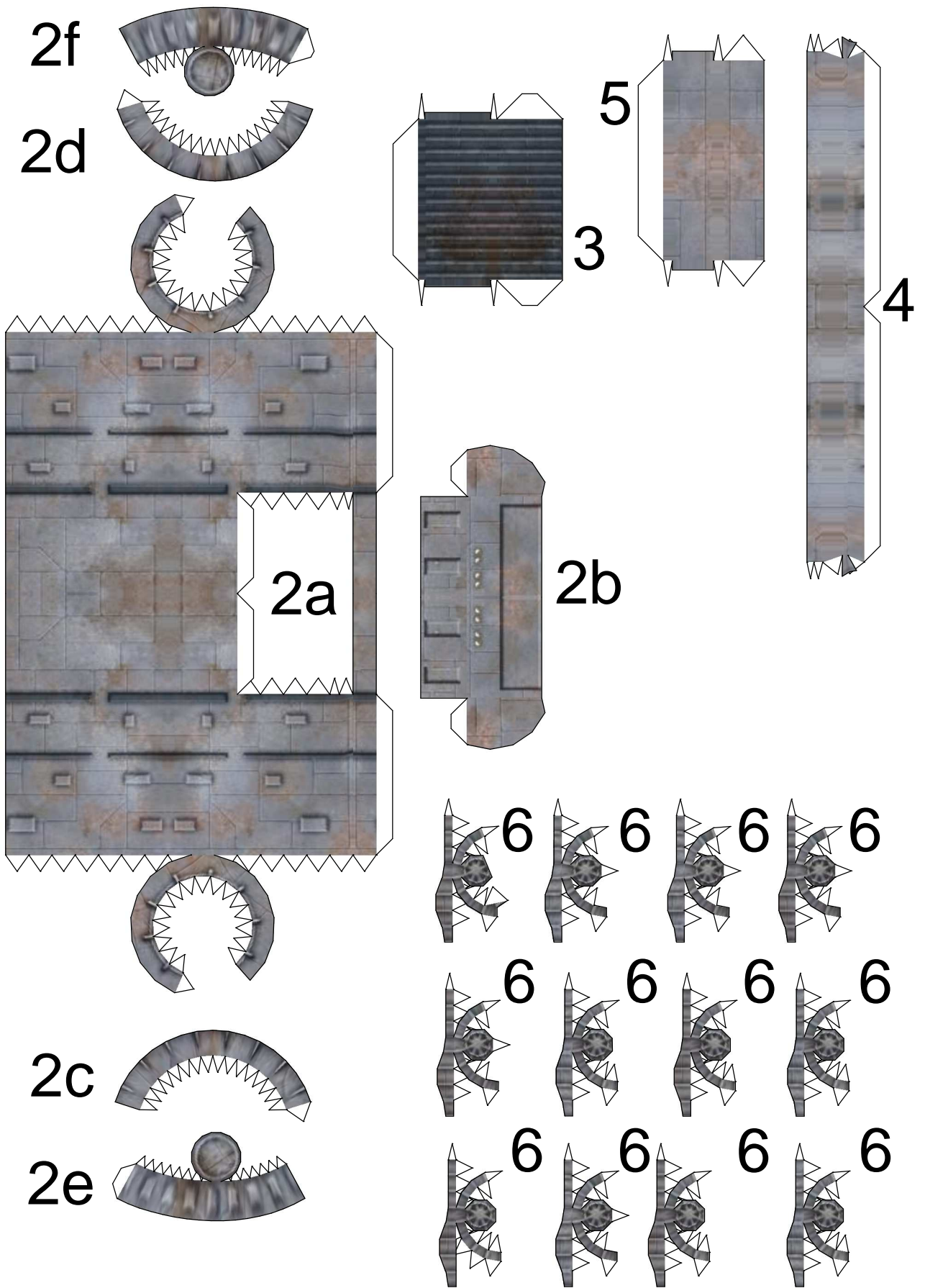
Original 3D model and textures
by
Coxxon and MadJohn

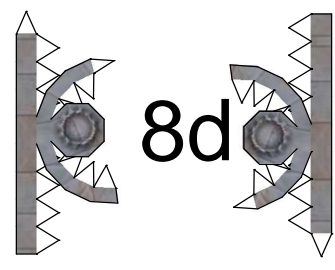
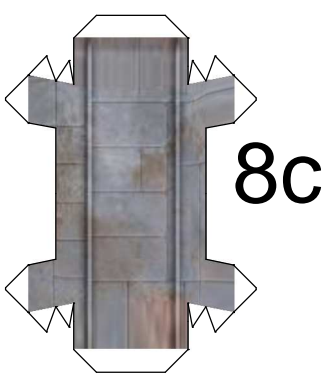
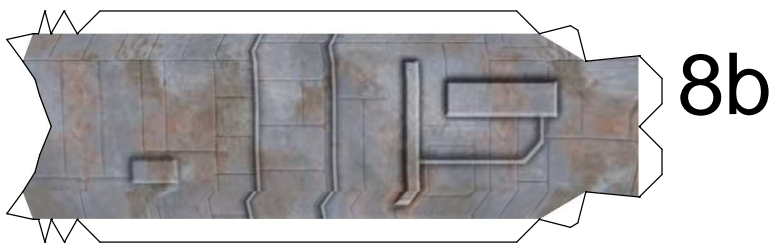
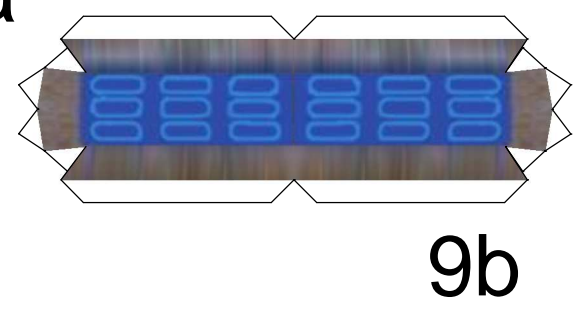
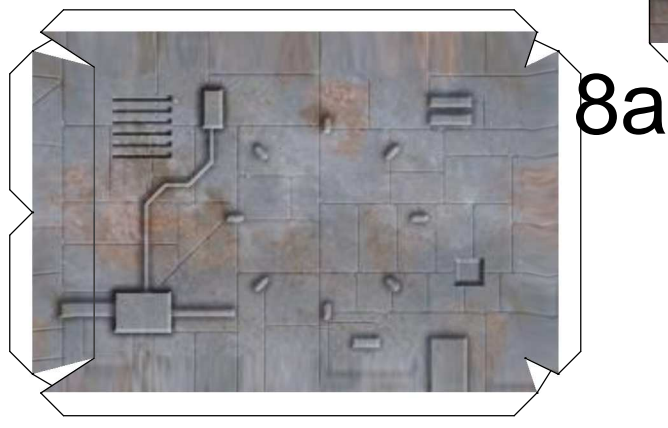
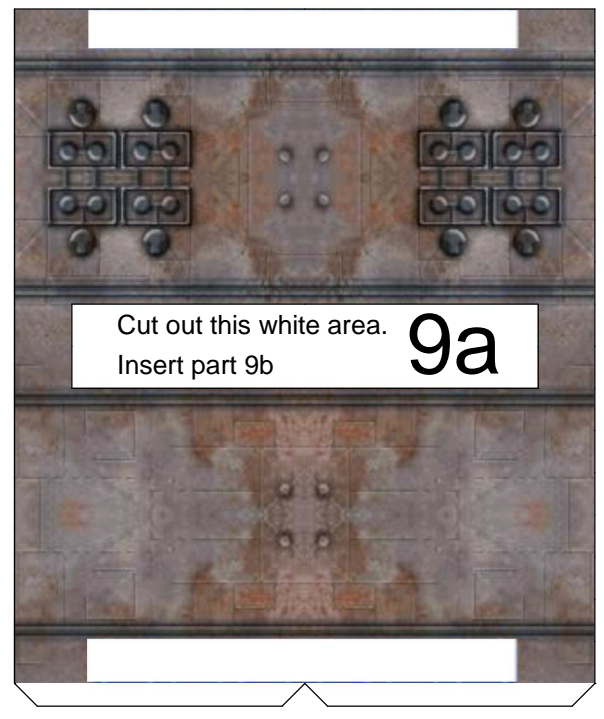
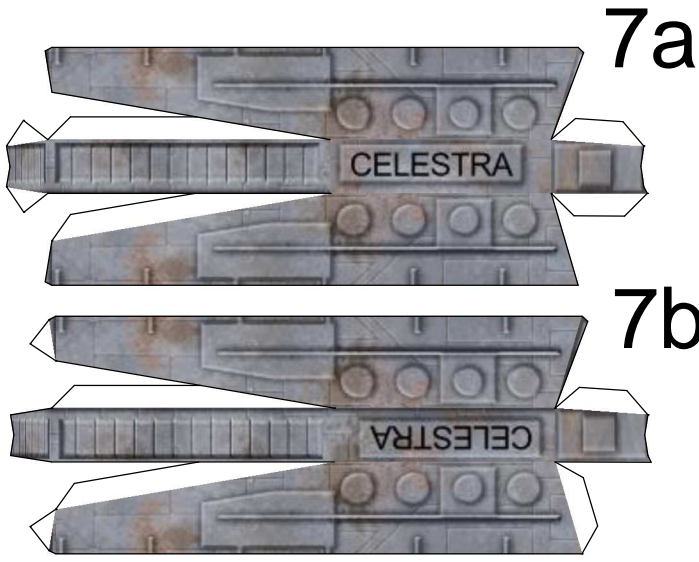
Paper Model conversion by Steve Bondy
<http://stevespaper.com>

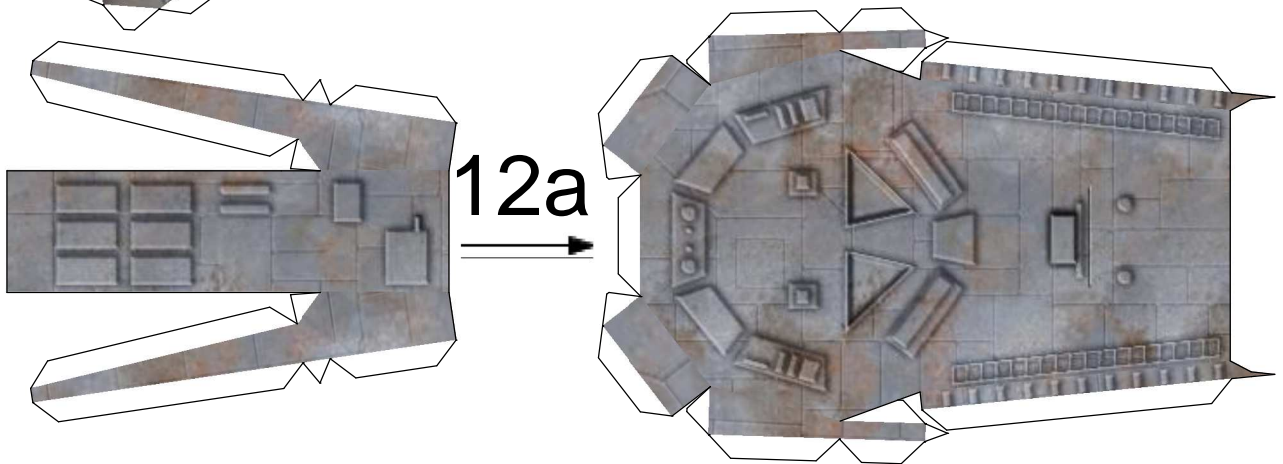
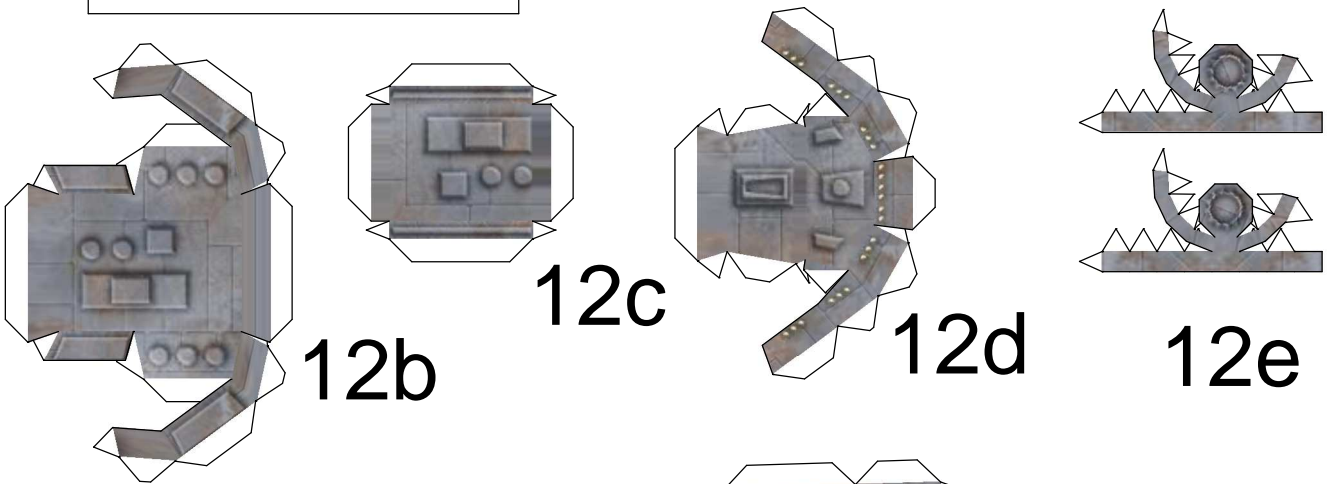
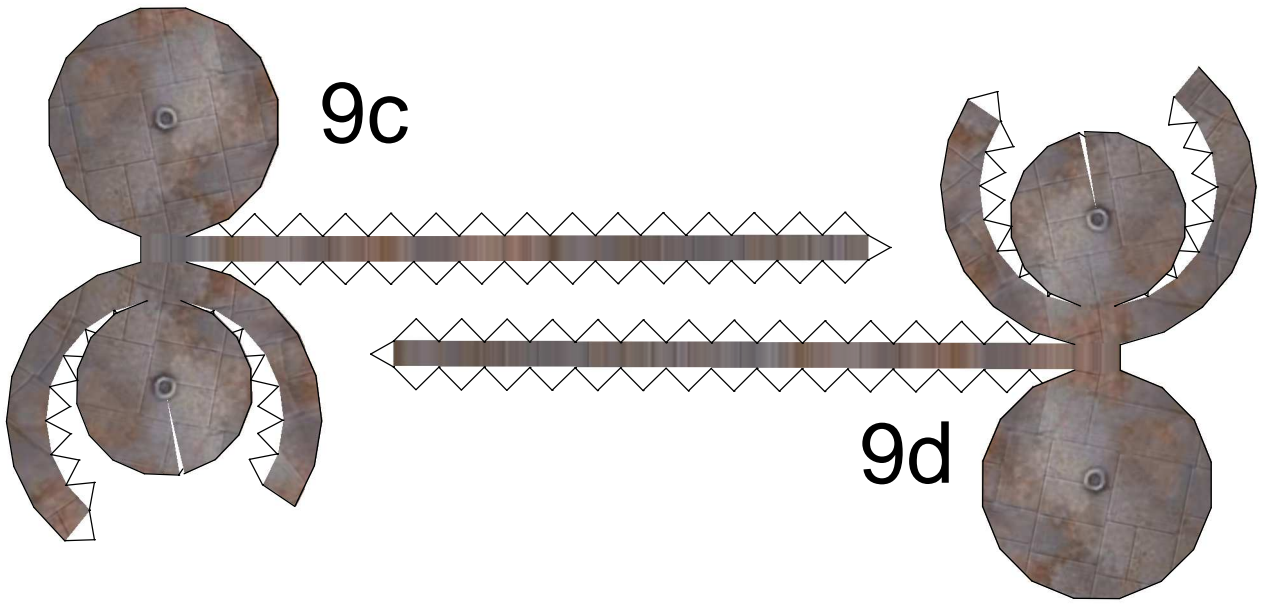
NOTE: This is the UNLINED version of the model
The fold lines for forming the parts have been removed
to make the finished model more attractive.
It is recommended that you download the lined version
as well to use as a reference while you build this one.

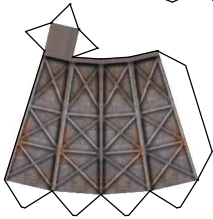
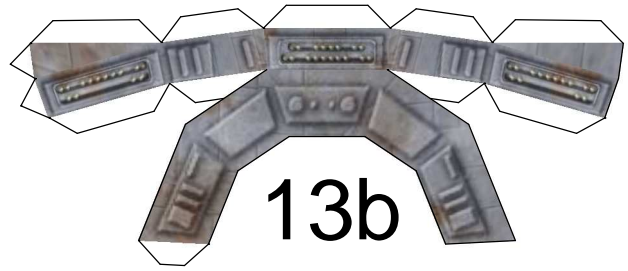
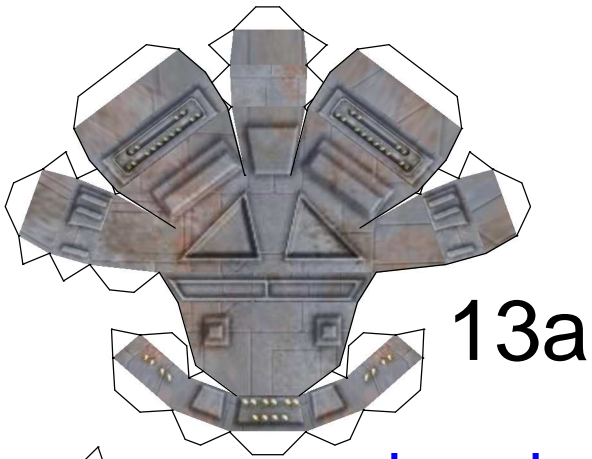


1a

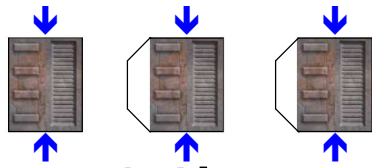




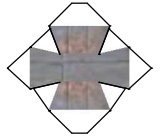
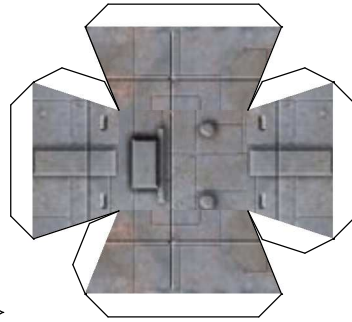




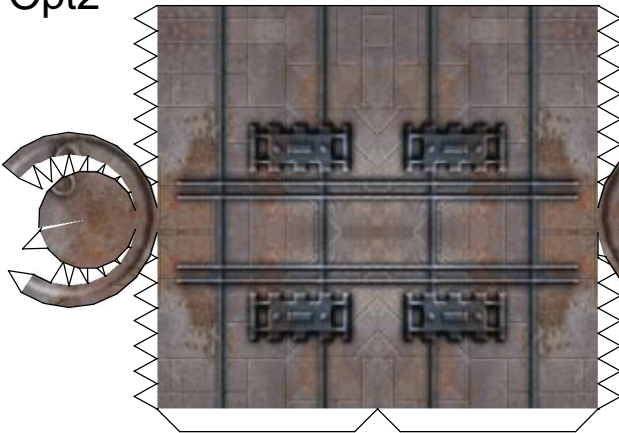
14a



14b



15b

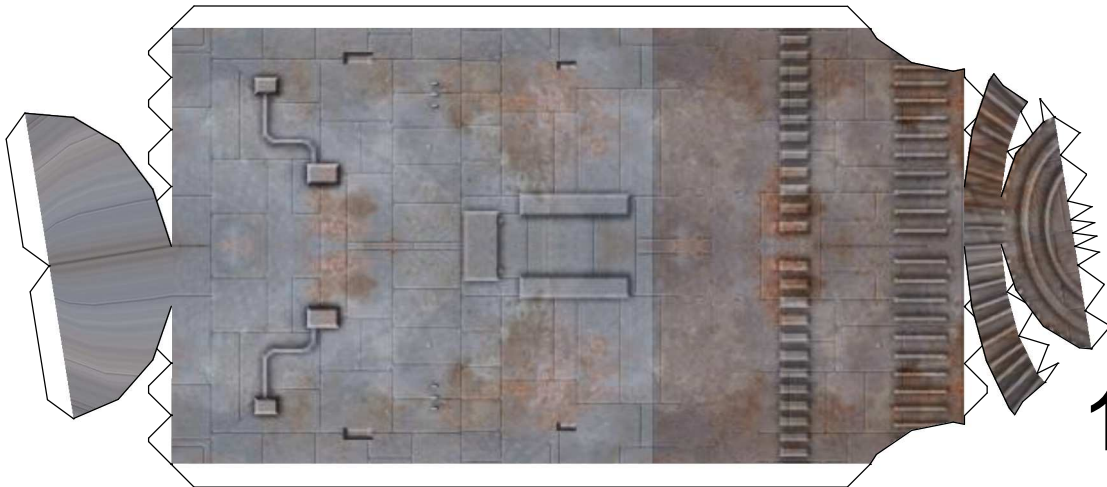


16

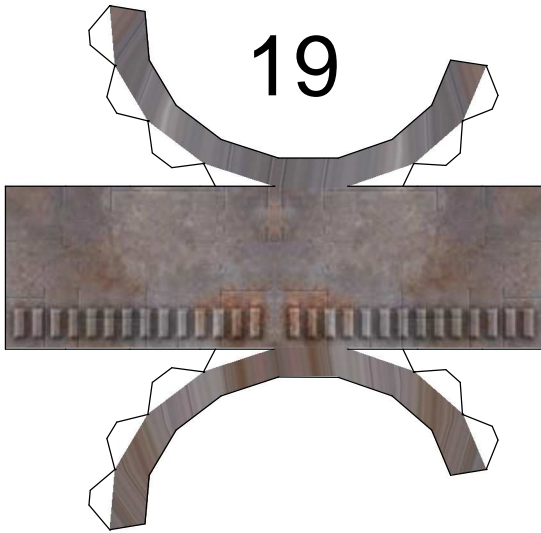
15a



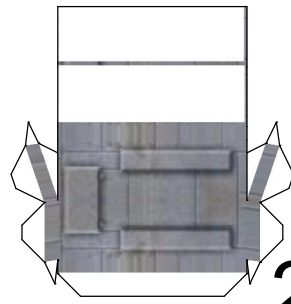
17



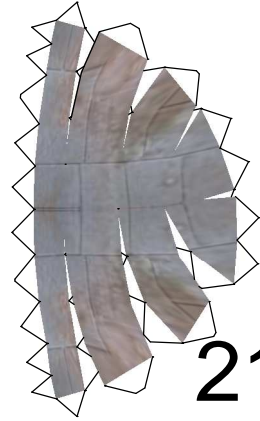
18



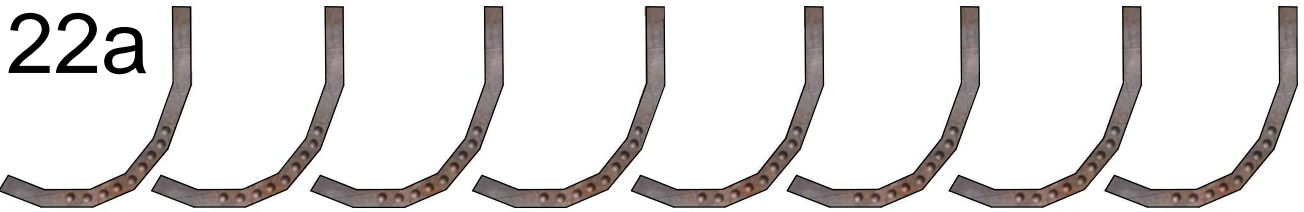
19



20

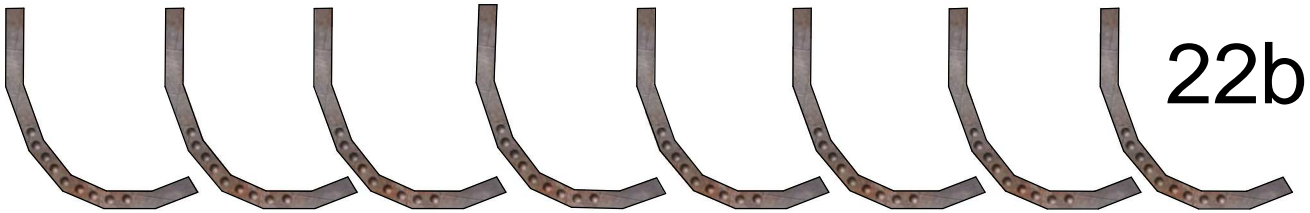


21



22a

Laminate these pieces to a pleasing thickness and glue back to back.
Use the strips on the next page to finish up the edges.



22b

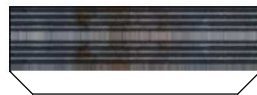
Rail 2



23a

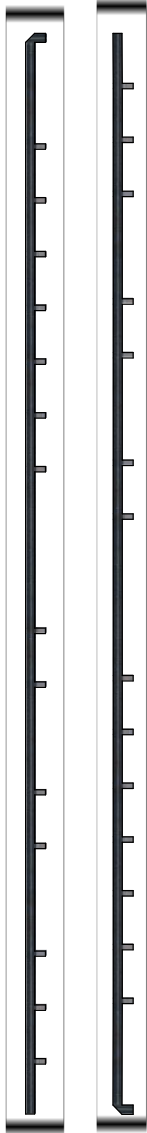


23b





Backing for the railings



Railings

Glue railing to backing
then cut out



Edging for 22