

# Celestra

from  
Battlestar Galactica



Original 3D model and textures  
by  
Coxxon and MadJohn

Paper Model conversion by Steve Bondy  
<http://stevespaper.com>

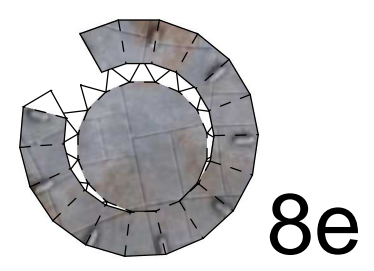
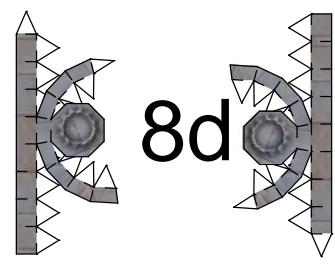
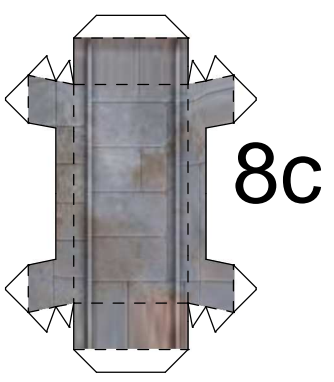
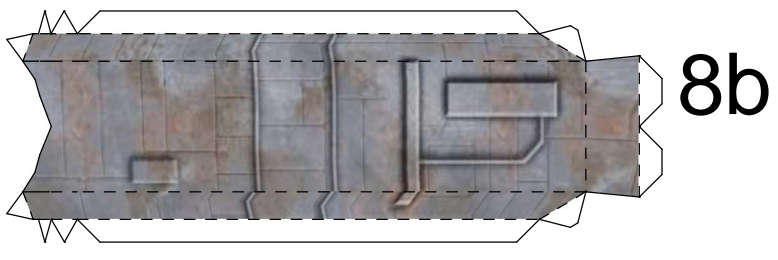
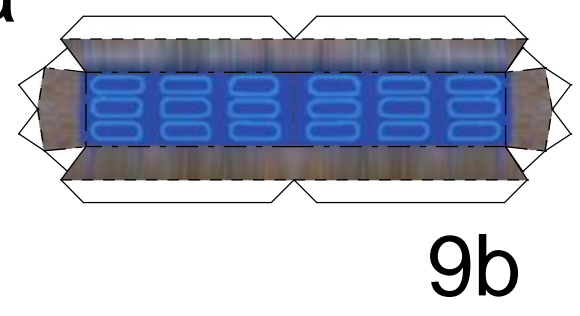
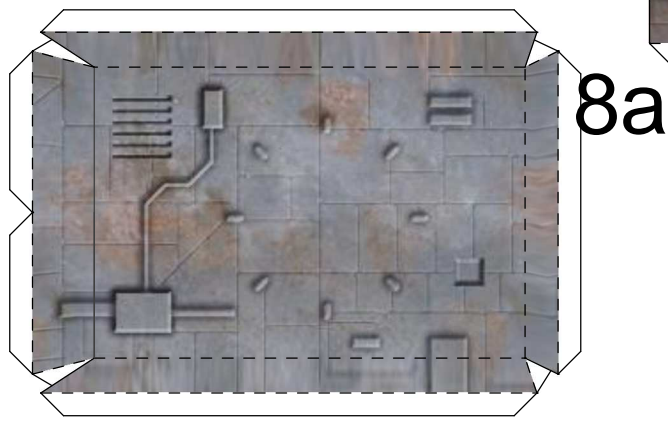
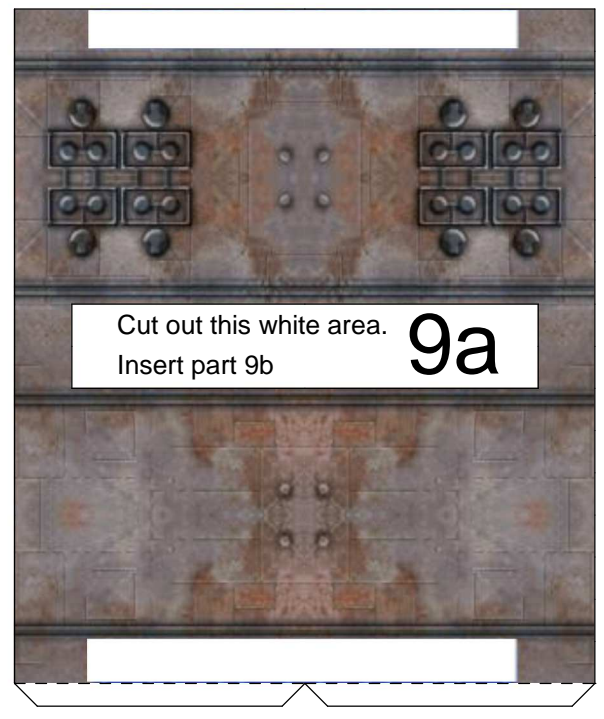
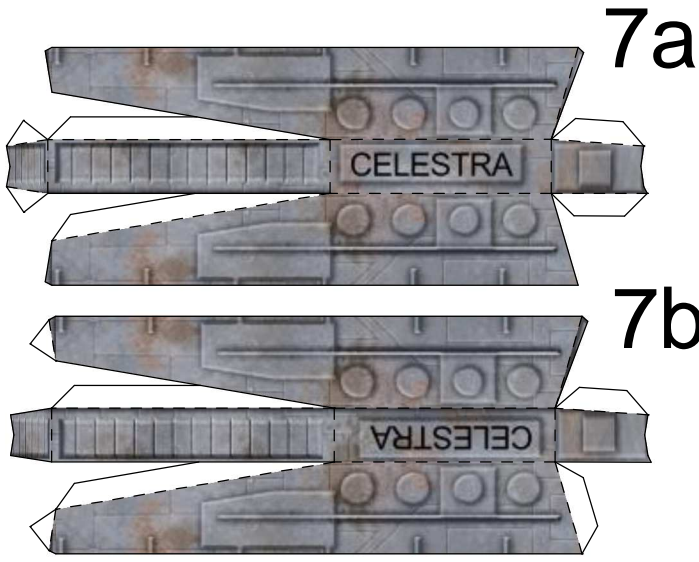
NOTE: This model shows the required fold lines for forming the parts. It is recommended that you download and build the unlined version and use this one as a reference. The end result will be much nicer.

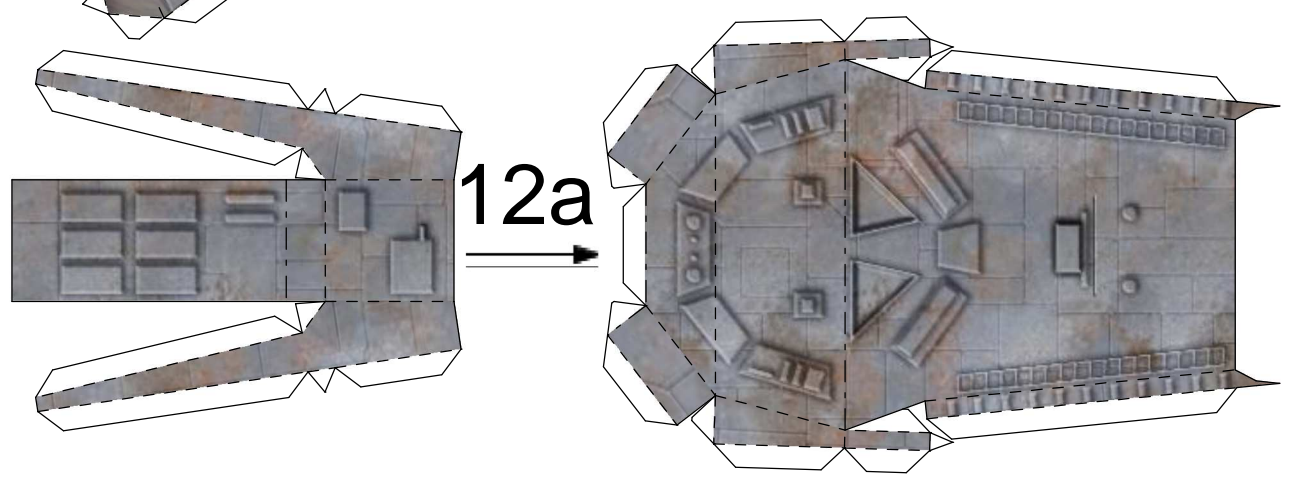
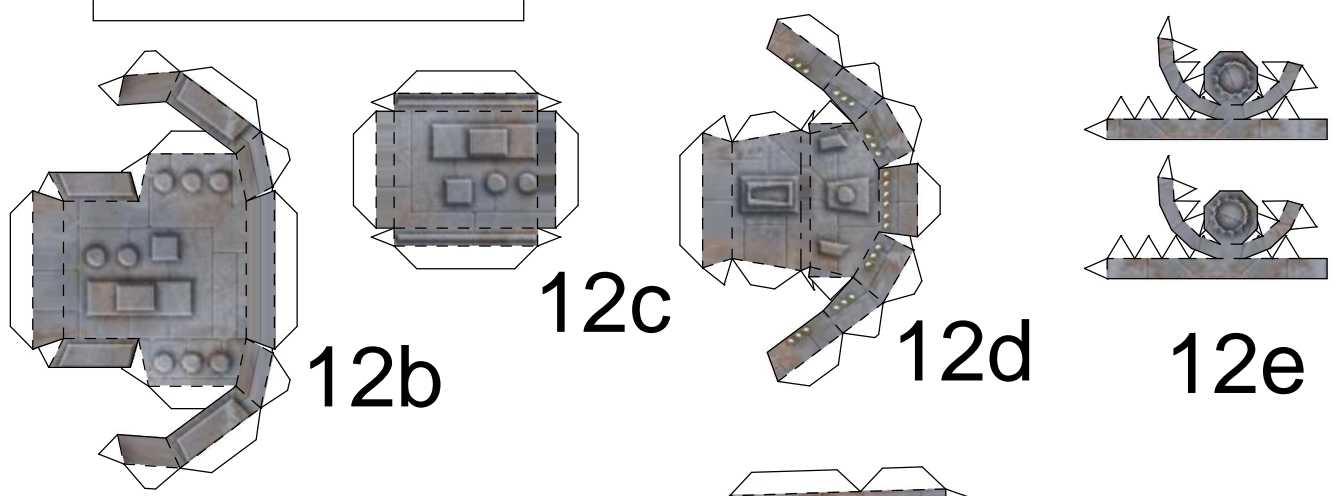
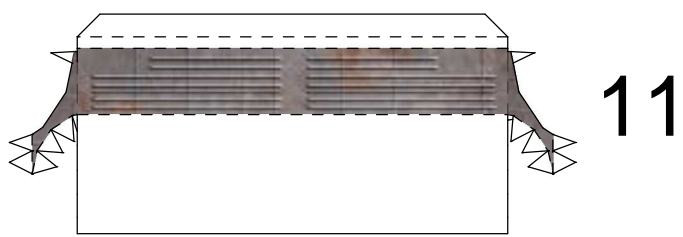
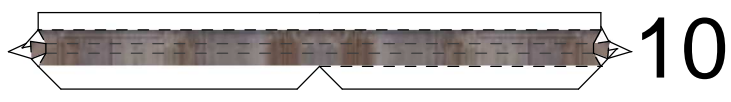
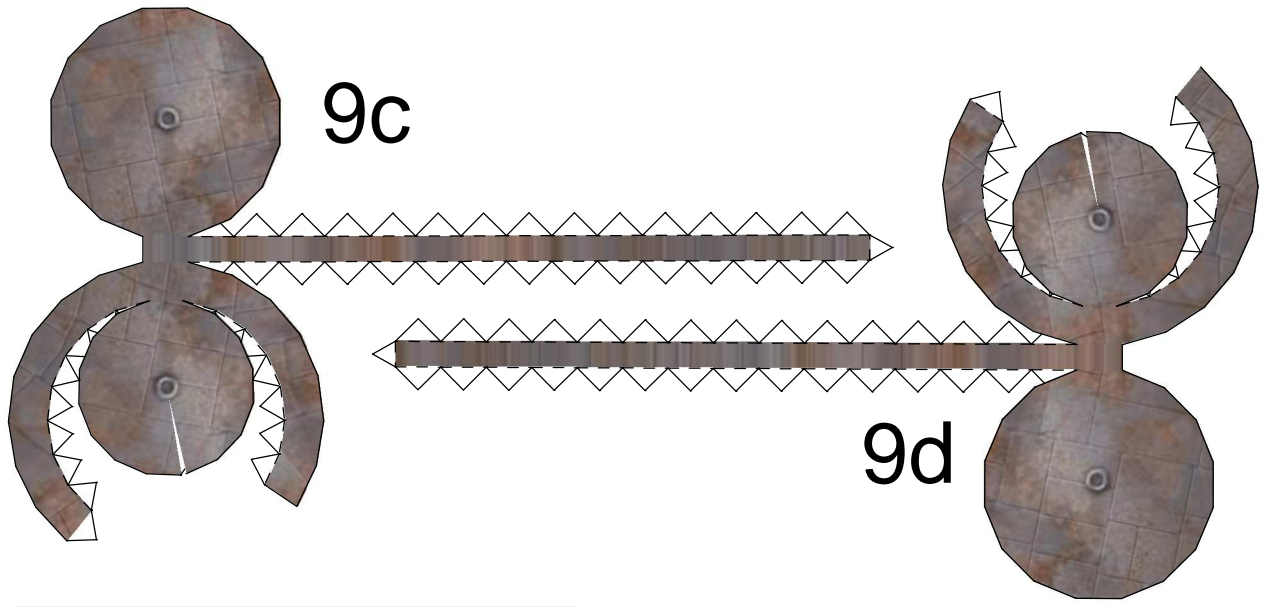


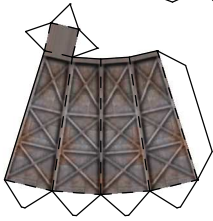
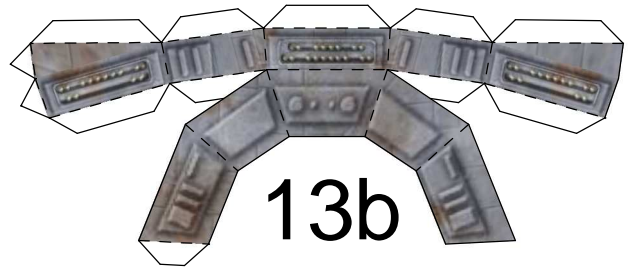
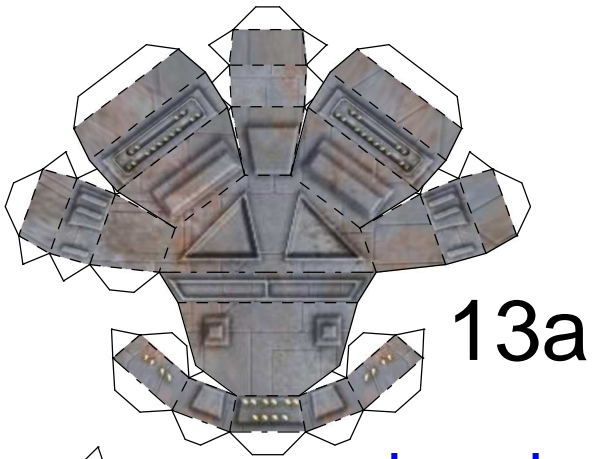
1a



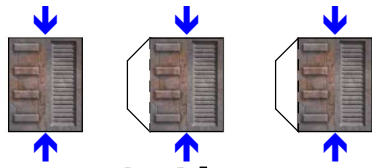




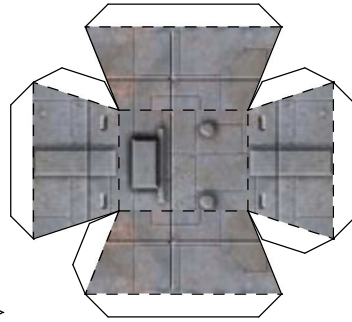




14a



14b

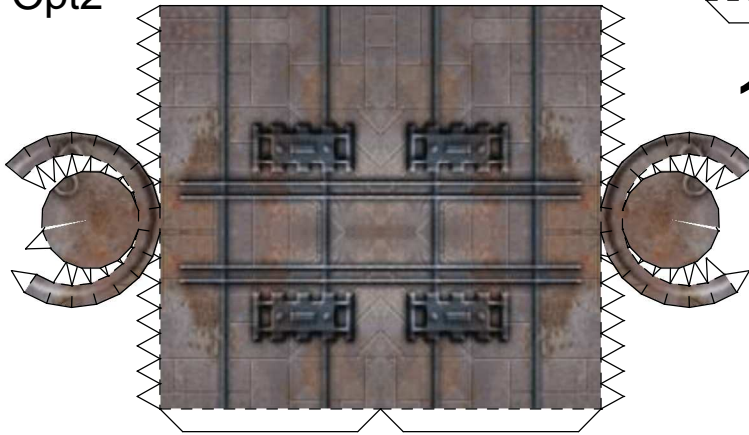


15b

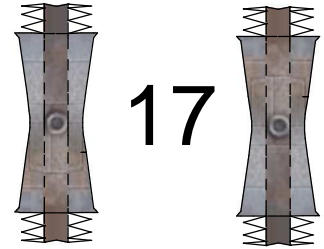
Opt2

15a

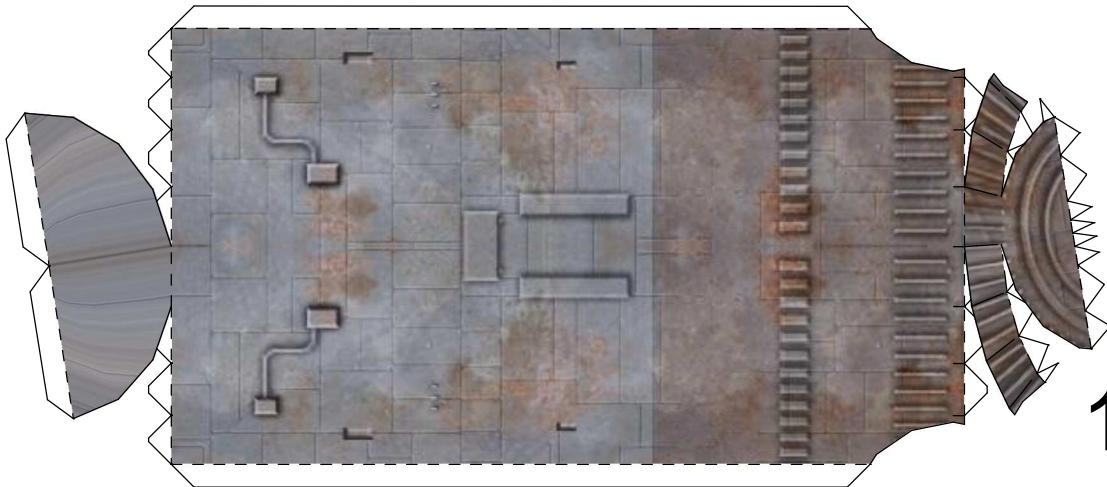
16



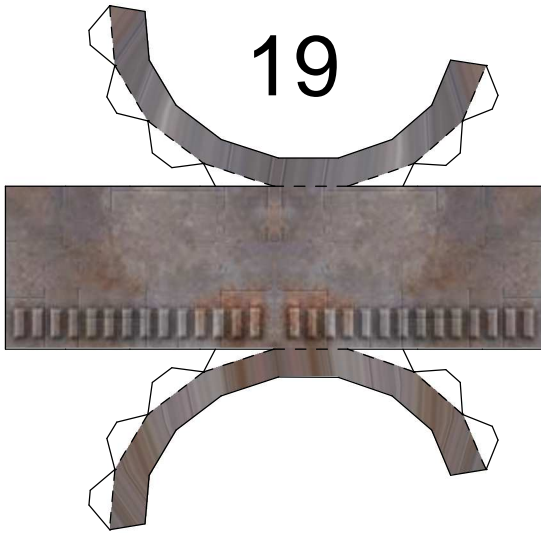
17



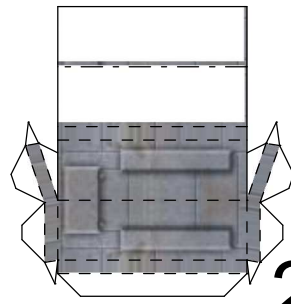
18



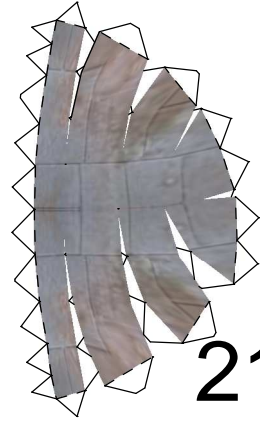




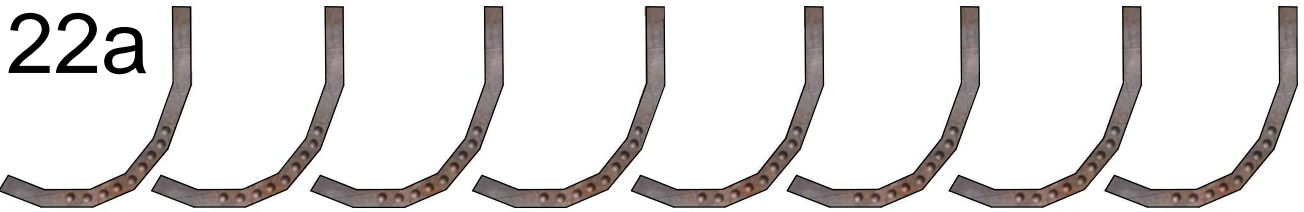
19



20

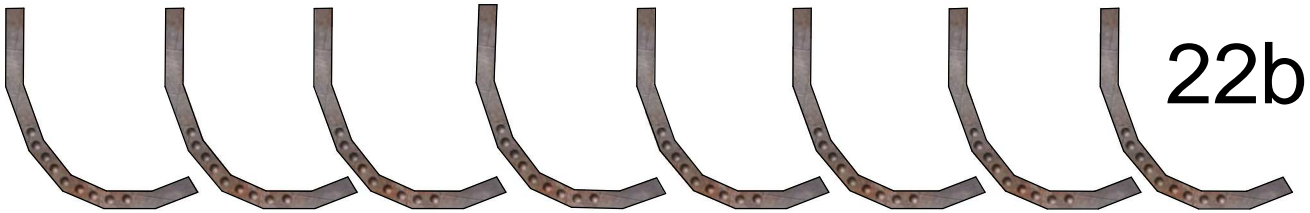


21



22a

Laminate these pieces to a pleasing thickness and glue back to back.  
Use the strips on the next page to finish up the edges.



22b

Rail 2



23a

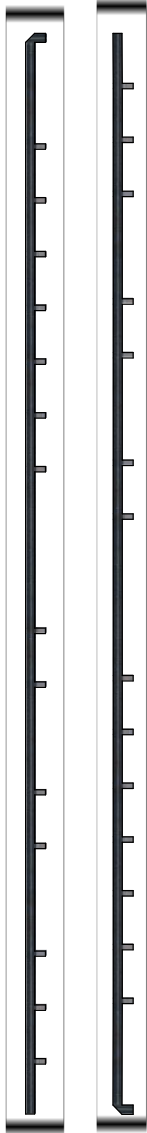


23b





Backing for the railings



Railings

Glue railing to backing  
then cut out



Edging for 22