

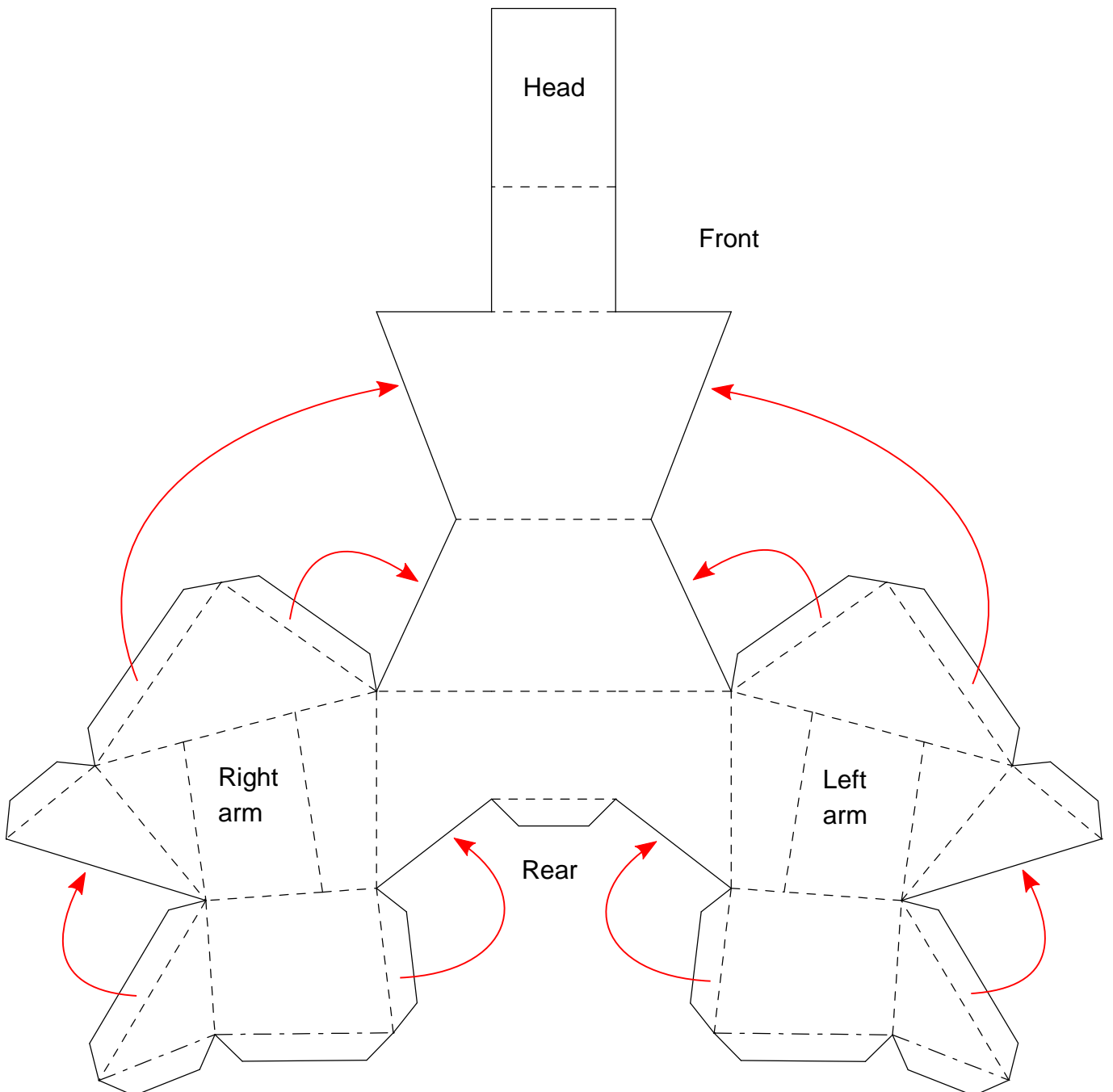
Descent Light Hulk Robot

Paper model by
Steve Bondy

For personal use only



<http://stevespaper.com>



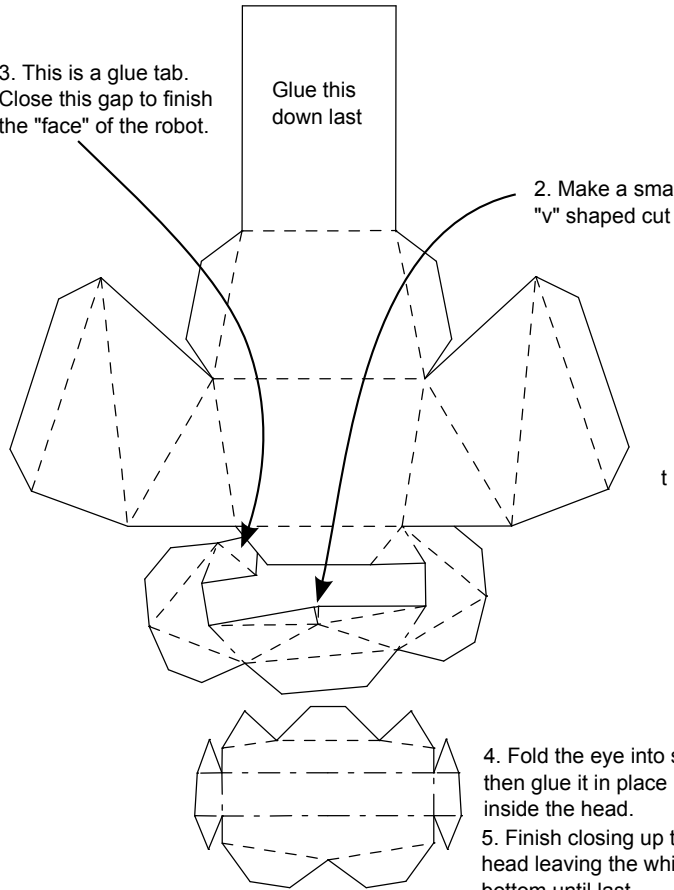
Head - make the eye first, score and shape the "face", glue eye in place, then finish closing up the head.

1. Score along all indicated lines

3. This is a glue tab. Close this gap to finish the "face" of the robot.

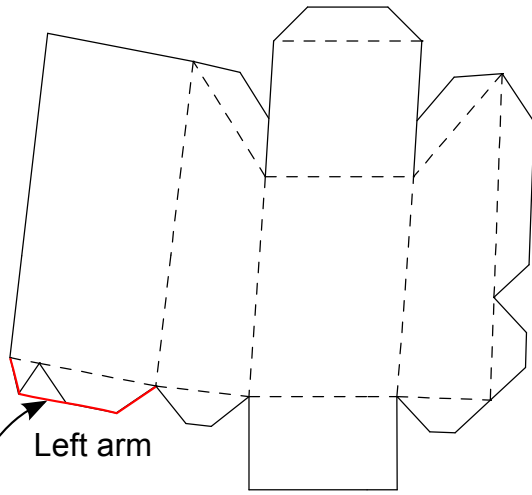
Glue this down last

2. Make a small "v" shaped cut here



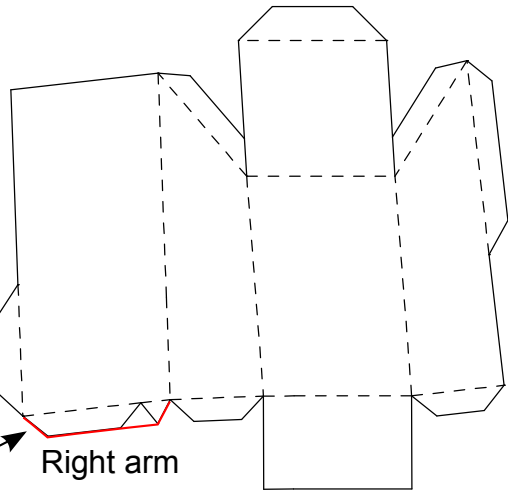
4. Fold the eye into shape then glue it in place inside the head.

5. Finish closing up the head leaving the white bottom until last



Left arm

Make these two flaps one big flap



Right arm

